

MEMORANDUM OF ACCEPTANCE OF DONATION

KNOW ALL MEN BY THESE PRESENTS:

This Memorandum of Acceptance of Donation memorializes the donation of Alvin Black (“Donor”) to Johnson County, Texas, hereafter known as Johnson County.

Whereas, Johnson County is a political subdivision of the State of Texas within Johnson County; and

Whereas, Donor declined to sign a donation form but did donate the subject property without restriction; and

Whereas, Donor indicated his preference that the photograph be displayed at the Guinn Justice Center, if possible; and

Whereas, Johnson County is authorized to act and does act by and through the Commissioners Court of Johnson County, pursuant to V.T.C.A., Local Government Code Section 81.032 to accept donations of property.

THEREFORE:

Donor does hereby donate and transfer to Johnson County the property described below:

Framed Photograph of Rhome Field dated 1940 - Historical Value Only

Property donated is not subject to return to the Donor by Johnson County.

Johnson County, by and through its Commissioners Court in an open session of the Commissioners Court, does hereby accept the unrestricted donation of the property described above.

(REMAINDER OF PAGE INTENTIONALLY LEFT BLANK)

Approved and Accepted this 8th day of May, 2023.

CPJ Boedeker

Christopher Boedeker, Johnson County Judge

Voted: yes, no, abstained

Rick Bailey

Rick Bailey, Comm. Pct. 1

Voted: yes, no, abstained

Kenny Howell

Kenny Howell, Comm. Pct. 2

Voted: yes, no, abstained

Mike White

Mike White, Comm. Pct. 3

Voted: yes, no, abstained

Larry Woolley

Larry Woolley, Comm. Pct. 4

Voted: yes, no, abstained

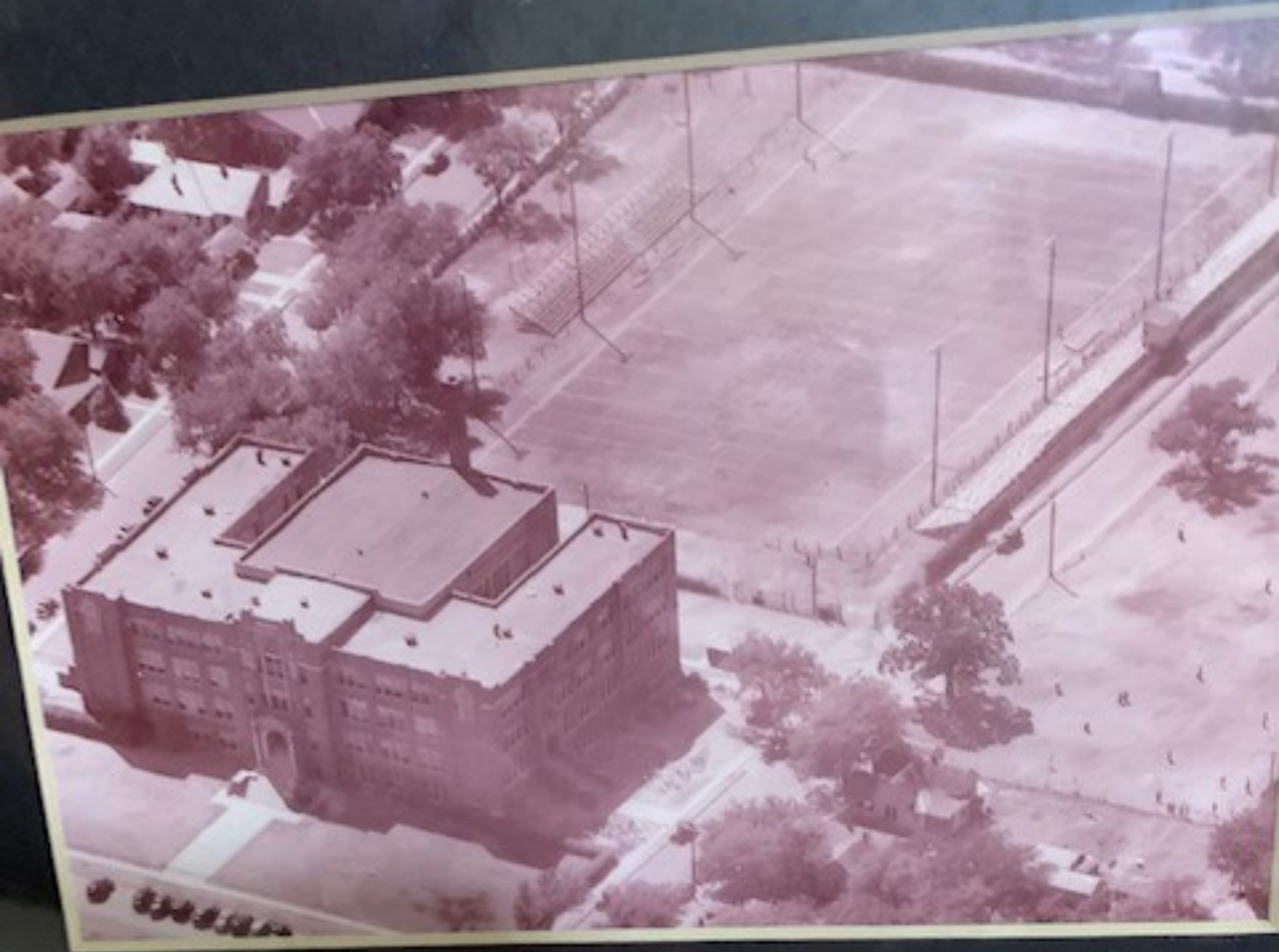
ATTEST: *April Long*
April Long, County Clerk



COMMISSIONERS COURT

MAY 08 2023

Approved



1919
RHOME FIELD
1940

Donated by Alvin Black to Johnson County
Class of 1960

4-26-23 - W. Bosma

